

LiDy(PO<sub>3</sub>)<sub>4</sub>Fathia Chehimi-Moumen<sup>a</sup> and Mokhtar Férid<sup>b\*</sup><sup>a</sup>Laboratoire d'Application de la Chimie aux Ressources et Substances Naturelles et à l'Environnement, Faculté des Sciences de Bizerte, 7021 Zarzouna, Tunisia, and<sup>b</sup>Unité des Matériaux de Terres Rares, Centre National de Recherches en Sciences des Matériaux, BP 95, 2050 Hammam-Lif, Tunisia

Correspondence e-mail: mokhtar.férid@inrst.nrnt.tn

Received 30 May 2008; accepted 3 June 2008

Key indicators: single-crystal X-ray study;  $T = 295$  K; mean  $\sigma(\text{P}-\text{O}) = 0.006$  Å;  $R$  factor = 0.039;  $wR$  factor = 0.088; data-to-parameter ratio = 12.3.

Single crystals of lithium dysprosium polyphosphate, LiDy(PO<sub>3</sub>)<sub>4</sub>, were prepared by the flux method. The atomic arrangement is built up by infinite (PO<sub>3</sub>)<sub>n</sub> chains extending along the  $b$  axis. Dy<sup>3+</sup> and Li<sup>+</sup> cations alternate in the middle of four such chains, with Dy···Li distances of 3.54 (1) and 3.48 (1) Å. The DyO<sub>8</sub> dodecahedra and LiO<sub>4</sub> tetrahedra deviate significantly from the ideal geometry. Both Dy and Li occupy special positions (Wyckoff position 4e, site symmetry 2).

## Related literature

For related literature, see: Averbuch-Pouchot & Bagieu Beucher (1987); Ben Zarkouna *et al.* (2005; 2007); Ben Zarkouna & Driss (2004); Durif (1995); Ettis *et al.* (2006); Férid (2006); Hashimoto *et al.* (1991); Hong (1975); Horchani *et al.* (2003); Liu & Li (1983); Chehimi-Moumen & Férid (2007); Koizumi (1976); Yamada *et al.* (1974).

## Experimental

## Crystal data

|                                     |   |
|-------------------------------------|---|
| LiDy(PO <sub>3</sub> ) <sub>4</sub> | $V = 884.24 (10) \text{ \AA}^3$           |
| $M_r = 485.32$                      | $Z = 4$                                   |
| Monoclinic, $C2/c$                  | Mo $K\alpha$ radiation                    |
| $a = 16.269 (1) \text{ \AA}$        | $\mu = 9.24 \text{ mm}^{-1}$              |
| $b = 7.0236 (3) \text{ \AA}$        | $T = 295 (2) \text{ K}$                   |
| $c = 9.5781 (8) \text{ \AA}$        | $0.10 \times 0.09 \times 0.08 \text{ mm}$ |
| $\beta = 126.106 (3)^\circ$         |   |

## Data collection

|   |                                       |
|---|---------------------------------------|
| Nonius KappaCCD diffractometer                                    | 3313 measured reflections             |
| Absorption correction: analytical<br>(de Meulenaer & Tompa, 1965) | 1021 independent reflections          |
| $T_{\min} = 0.42$ , $T_{\max} = 0.45$                             | 858 reflections with $I > 2\sigma(I)$ |
|   | $R_{\text{int}} = 0.080$              |

## Refinement

|                                 |  |
|---------------------------------|--|
| $R[F^2 > 2\sigma(F^2)] = 0.038$ | 83 parameters                                  |
| $wR(F^2) = 0.087$               | $\Delta\rho_{\max} = 2.26 \text{ e \AA}^{-3}$  |
| $S = 0.95$                      | $\Delta\rho_{\min} = -2.13 \text{ e \AA}^{-3}$ |
| 1021 reflections                |  |

Data collection: *COLLECT* (Nonius, 1998); cell refinement: *DENZO/SCALEPACK* (Otwinowski & Minor, 1997); data reduction: *DENZO/SCALEPACK*; program(s) used to solve structure: *SHELXS97* (Sheldrick, 2008); program(s) used to refine structure: *SHELXL97* (Sheldrick, 2008); molecular graphics: *DIAMOND* (Brandenburg, 1999); software used to prepare material for publication: *SHELXL97*.

This work was supported by the Ministry of Higher Education, Scientific Research and Technology of Tunisia.

Supplementary data and figures for this paper are available from the IUCr electronic archives (Reference: FI2064).

## References

- Averbuch-Pouchot, M. T. & Bagieu Beucher, M. (1987). *Z. Anorg. Allg. Chem.* **552**, 171–180.
- Ben Zarkouna, E. & Driss, A. (2004). *Acta Cryst.* **E60**, i102–i104.
- Ben Zarkouna, E., Férid, M. & Driss, A. (2005). *Mater. Res. Bull.* **40**, 198–1992.
- Ben Zarkouna, E., Horchani-Naifer, K., Férid, M. & Driss, A. (2007). *Acta Cryst.* **E63**, i1–i2.
- Brandenburg, K. (1999). *DIAMOND*. Crystal Impact GbR, Bonn, Germany.
- Chehimi-Moumen, F. & Férid, M. (2007). *Acta Cryst.* **E63**, i129–i130.
- Durif, A. (1995). *Crystal Chemistry of Condensed Phosphates*. New York: Plenum Press.
- Ettis, H., Naili, H. & Mhiri, T. (2006). *J. Solid State Chem.* **179**, 3107–3113.
- Férid, M. (2006). *Etude des propriétés cristallographiques et physiques de phosphates condensés de terres rares*. Paris: Publibook.
- Hashimoto, N., Takada, Y., Sato, K. & Ibuki, S. (1991). *J. Lumin.* **48–49**, 893–897.
- Hong, H. Y. P. (1975). *Mater. Res. Bull.* **10**, 635–640.
- Horchani, K., Gâcon, J. C., Férid, M., Trabelsi-Ayadi, M., Krachni, G. K. & Liu, G. K. (2003). *Opt. Mater.* **24**, 169–174.
- Koizumi, H. (1976). *Acta Cryst.* **B32**, 266–268.
- Liu, J.-C. & Li, D.-Y. (1983). *Acta Phys. Sinica*, **32**, 786–790.
- Meulenaer, J. de & Tompa, H. (1965). *Acta Cryst.* **19**, 1014–1018.
- Nonius (1998). *COLLECT*. Nonius BV, Delft, The Netherlands.
- Otwinowski, Z. & Minor, W. (1997). *Methods in Enzymology*, Vol. 276, *Macromolecular Crystallography*, Part A, edited by C. W. Carter Jr & R. M. Sweet, pp. 307–326. New York: Academic Press.
- Sheldrick, G. M. (2008). *Acta Cryst.* **A64**, 112–122.
- Yamada, T., Otsuka, K. & Nakano, J. (1974). *J. Appl. Phys.* **45**, 5096–5097.

**supplementary materials**

*Acta Cryst.* (2008). E64, i45 [ doi:10.1107/S1600536808016875 ]

## LiDy(PO<sub>3</sub>)<sub>4</sub>

F. Chehimi-Moumen and M. . Férid

### Comment

Condensed phosphates of rare earth and monovalent cations of general formula M<sup>I</sup>Ln(PO<sub>3</sub>)<sub>4</sub> have attracted large interest in the literature of the last three decades due to their possible application as phosphors and laser materials (Yamada *et al.*, 1974; Hashimoto *et al.*, 1991; Horchani *et al.*, 2003).

In order to enrich the chemistry of this compound family, we have successfully synthesized single crystals of lithium dysprosium polyphosphate and investigated its crystal structure.

Structural studies reported for lithium lanthanide polyphosphates LiLn(PO<sub>3</sub>)<sub>4</sub>, Ln = Nd (Hong, 1975, Koizumi, 1976), Er (Liu *et al.*, 1983, Ben Zarkouna *et al.*, 2005), Yb (Ben Zarkouna *et al.*, 2004), Gd (Ettis *et al.*, 2006), Tb (Ben Zarkouna *et al.*, 2007), showed that all these compounds crystallize in space group *C2/c* and have similar unit-cell parameters. However, it was reported that the lithium atom is located in the (4a) site in LiNd(PO<sub>3</sub>)<sub>4</sub> (Hong, 1975) and LiEr(PO<sub>3</sub>)<sub>4</sub> (Liu *et al.*, 1983) and in the (4 e) site in the remaining structures. LiDy(PO<sub>3</sub>)<sub>4</sub> is found to be isotypic with the latter group LiLn(PO<sub>3</sub>)<sub>4</sub> previously reported. The corresponding asymmetric unit (Fig. 1) is formed by dysprosium and lithium atoms, both located in the (4 e) site, and two PO<sub>4</sub> tetrahedra with all atoms in general positions.

These tetrahedra share common corners yielding infinite chains, of four tetrahedra period, extending along the 2<sub>1</sub> screw axes in the b direction. Four such chains cross the unit cell (Fig. 2).

The polyphosphate chains display two type of distances, P—O terminal ranging from 1.475 (5) to 1.500 (5) Å and P—O bridging, noticeably longer, ranging from 1.573 (5) to 1.619 (5) Å. These distances are comparable with those reported for other condensed phosphates (Durif, 1995; Averbuch-Pouchot & Bagieu Beucher, 1987; Chehimi-Moumen & Férid, 2007; Férid, 2006, Ben Zarkouna *et al.*, 2007).

Dy<sup>3+</sup> and Li<sup>+</sup> cations lie alternately on the two-fold axis in the middle of four polyphosphate chains, with Dy—Li distances of 3.55 (1) and 3.48 (1) Å. They are coordinated by eight and four external oxygen atoms, respectively. The resulting DyO<sub>8</sub> dodecahedra and LiO<sub>4</sub> tetrahedra are considerably distorted (Figure 3). The Dy—O and Li—O distances range from 2.288 (5) to 2.513 (5) Å and 1.95 (1) to 1.99 (1) Å respectively. The DyO<sub>8</sub> dodecahedra share corners and edges with neighbouring LiO<sub>4</sub> (Fig. 3) and PO<sub>4</sub> tetrahedra building a three dimensional network (Fig. 4). It can be noted that, in the present arrangement, the DyO<sub>8</sub> dodecahedra are isolated from each other, the shortest Dy—Dy distance is 5.563 (5) Å.

### Experimental

A mixture of Li<sub>2</sub>CO<sub>3</sub> (2 g), Dy<sub>2</sub>O<sub>3</sub> (0.5 g) and H<sub>3</sub>PO<sub>4</sub> (85%, 17 ml), were mixed in a vitreous carbon crucible and preheated progressively to 473 K for 2 h. The temperature was then raised and kept at 600 K for 15 days. Colourless single crystals of LiDy(PO<sub>3</sub>)<sub>4</sub> were isolated from the reaction mixture by washing with hot water.

## Refinement

The distances between dysprosium atoms and the highest peak and the deepest hole are respectively, 1.39 Å and 0.78 Å.

## Figures

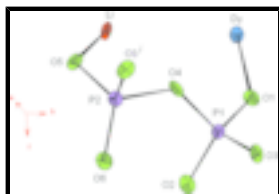


Fig. 1. : The asymmetric unit of  $\text{LiDy}(\text{PO}_3)_4$  with anisotropic displacement parameters drawn at the 50% probability level. Symmetry code: (i)  $-x + 1, y, -z + 1.5$ .

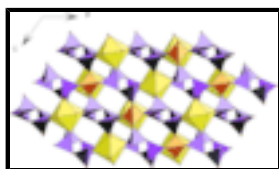


Fig. 2. : Projection of the structure of  $\text{LiDy}(\text{PO}_3)_4$  along the  $b$  axis.



Fig. 3. : The O-atom coordination around Dy and Li atoms showing the connection of  $\text{DyO}_8$  and  $\text{LiO}_4$  polyhedra. [Symmetry codes: (i)  $-x + 1, y, -z + 1.5$ ; (ii)  $-x + 1, -y + 1, -z + 2$ ; (iii)  $x, -y + 1, z - 1/2$ ; (iv)  $x, y + 1, z$ ; (v)  $-x + 1, y + 1, -z + 1.5$ .

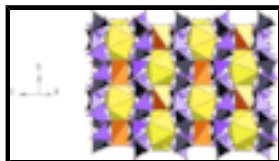


Fig. 4. : Structural arrangement of  $\text{LiDy}(\text{PO}_3)_4$  along the  $101$  direction.

## lithium dysprosium polyphosphate

### Crystal data

$\text{LiDy}(\text{P}_1\text{O}_3)_4$

$M_r = 485.32$

Monoclinic,  $C2/c$

Hall symbol:  $-C 2yc$

$a = 16.2690$  (10) Å

$b = 7.0236$  (3) Å

$c = 9.5781$  (8) Å

$\beta = 126.106$  (3)°

$V = 884.24$  (10) Å<sup>3</sup>

$Z = 4$

$F_{000} = 900$

$D_x = 3.646$  Mg m<sup>-3</sup>

Mo  $K\alpha$  radiation

$\lambda = 0.71073$  Å

Cell parameters from 1631 reflections

$\theta = 0.7\text{--}27.9^\circ$

$\mu = 9.24$  mm<sup>-1</sup>

$T = 295$  (2) K

Block, colourless

$0.10 \times 0.09 \times 0.08$  mm

### Data collection

Nonius KappaCCD  
diffractometer

1021 independent reflections

|   |                                       |
|---|---------------------------------------|
| Radiation source: fine-focus sealed tube                          | 858 reflections with $I > 2\sigma(I)$ |
| Monochromator: graphite   | $R_{\text{int}} = 0.080$              |
| $T = 295(2)$ K  | $\theta_{\text{max}} = 27.7^\circ$    |
| $\varphi$ & $\omega$ scans  | $\theta_{\text{min}} = 3.6^\circ$     |
| Absorption correction: analytical<br>(de Meulenaer & Tompa, 1965) | $h = -21 \rightarrow 20$              |
| $T_{\text{min}} = 0.42$ , $T_{\text{max}} = 0.45$                 | $k = -9 \rightarrow 7$                |
| 3313 measured reflections   | $l = -12 \rightarrow 9$               |

### Refinement

|                                 |  |
|---------------------------------|--|
| Refinement on $F^2$             | Primary atom site location: structure-invariant direct methods |
| Least-squares matrix: full      | Secondary atom site location: difference Fourier map           |
| $R[F^2 > 2\sigma(F^2)] = 0.038$ | $w = 1/[\sigma^2(F_o^2) + (0.0468P)^2]$                        |
| $wR(F^2) = 0.087$               | where $P = (F_o^2 + 2F_c^2)/3$                                 |
| $S = 0.95$                      | $(\Delta/\sigma)_{\text{max}} < 0.001$                         |
| 1021 reflections                | $\Delta\rho_{\text{max}} = 2.26 \text{ e } \text{\AA}^{-3}$    |
| 83 parameters                   | $\Delta\rho_{\text{min}} = -2.13 \text{ e } \text{\AA}^{-3}$   |
|                                 | Extinction correction: none                                    |

### Special details

**Geometry.** All e.s.d.'s (except the e.s.d. in the dihedral angle between two l.s. planes) are estimated using the full covariance matrix. The cell e.s.d.'s are taken into account individually in the estimation of e.s.d.'s in distances, angles and torsion angles; correlations between e.s.d.'s in cell parameters are only used when they are defined by crystal symmetry. An approximate (isotropic) treatment of cell e.s.d.'s is used for estimating e.s.d.'s involving l.s. planes.

**Refinement.** Refinement of  $F^2$  against ALL reflections. The weighted  $R$ -factor  $wR$  and goodness of fit  $S$  are based on  $F^2$ , conventional  $R$ -factors  $R$  are based on  $F$ , with  $F$  set to zero for negative  $F^2$ . The threshold expression of  $F^2 > \sigma(F^2)$  is used only for calculating  $R$ -factors(gt) *etc.* and is not relevant to the choice of reflections for refinement.  $R$ -factors based on  $F^2$  are statistically about twice as large as those based on  $F$ , and  $R$ -factors based on ALL data will be even larger.

### Fractional atomic coordinates and isotropic or equivalent isotropic displacement parameters ( $\text{\AA}^2$ )

|     | $x$          | $y$         | $z$        | $U_{\text{iso}}^*/U_{\text{eq}}$ |
|-----|--------------|-------------|------------|----------------------------------|
| Dy1 | 0.5000       | 0.79714 (6) | 0.7500     | 0.01295 (18)                     |
| P1  | 0.36225 (14) | 0.5523 (2)  | 0.8849 (2) | 0.0108 (4)                       |
| P2  | 0.35333 (14) | 0.1513 (3)  | 0.8039 (2) | 0.0124 (4)                       |
| O1  | 0.3870 (4)   | 0.7158 (6)  | 0.8178 (7) | 0.0148 (11)                      |
| O2  | 0.4353 (4)   | 0.5025 (7)  | 1.0727 (6) | 0.0142 (10)                      |
| O3  | 0.2555 (4)   | 0.5780 (7)  | 0.8535 (7) | 0.0141 (11)                      |
| O4  | 0.3421 (4)   | 0.3778 (7)  | 0.7655 (6) | 0.0169 (11)                      |
| O5  | 0.4287 (4)   | 0.0852 (7)  | 0.7730 (7) | 0.0147 (10)                      |
| O6  | 0.3726 (4)   | 0.1159 (6)  | 0.9727 (6) | 0.0180 (12)                      |
| Li  | 0.5000       | 0.292 (2)   | 0.7500     | 0.012 (3)                        |

## supplementary materials

---

### Atomic displacement parameters ( $\text{\AA}^2$ )

|     | $U^{11}$    | $U^{22}$   | $U^{33}$   | $U^{12}$     | $U^{13}$   | $U^{23}$     |
|-----|-------------|------------|------------|--------------|------------|--------------|
| Dy1 | 0.0130 (3)  | 0.0101 (3) | 0.0150 (3) | 0.000        | 0.0078 (2) | 0.000        |
| P1  | 0.0103 (9)  | 0.0098 (9) | 0.0115 (9) | 0.0003 (6)   | 0.0059 (8) | -0.0008 (6)  |
| P2  | 0.0106 (10) | 0.0115 (9) | 0.0123 (9) | -0.0008 (7)  | 0.0053 (8) | -0.0007 (7)  |
| O1  | 0.016 (3)   | 0.013 (3)  | 0.014 (3)  | -0.002 (2)   | 0.008 (2)  | 0.0012 (19)  |
| O2  | 0.008 (3)   | 0.014 (2)  | 0.016 (3)  | -0.0022 (19) | 0.004 (2)  | 0.001 (2)    |
| O3  | 0.007 (3)   | 0.017 (3)  | 0.018 (3)  | 0.0056 (19)  | 0.007 (2)  | 0.006 (2)    |
| O4  | 0.023 (3)   | 0.012 (3)  | 0.012 (2)  | 0.004 (2)    | 0.008 (2)  | 0.0057 (19)  |
| O5  | 0.015 (3)   | 0.016 (2)  | 0.020 (3)  | 0.0014 (19)  | 0.014 (2)  | -0.0011 (19) |
| O6  | 0.027 (3)   | 0.008 (2)  | 0.019 (3)  | -0.003 (2)   | 0.013 (3)  | -0.0008 (19) |
| Li  | 0.015 (9)   | 0.004 (8)  | 0.023 (9)  | 0.000        | 0.015 (8)  | 0.000        |

### Geometric parameters ( $\text{\AA}$ , $^\circ$ )

|   |             |                                      |            |
|---|-------------|--------------------------------------|------------|
| Dy1—O6 <sup>i</sup>                     | 2.288 (5)   | P2—O3 <sup>vi</sup>                  | 1.589 (5)  |
| Dy1—O6 <sup>ii</sup>                    | 2.288 (5)   | P2—O4                                | 1.619 (5)  |
| Dy1—O1                                  | 2.352 (5)   | P2—Li                                | 2.896 (5)  |
| Dy1—O1 <sup>iii</sup>                   | 2.352 (5)   | O2—Li <sup>i</sup>                   | 1.992 (11) |
| Dy1—O5 <sup>iv</sup>                    | 2.406 (5)   | O2—Dy1 <sup>i</sup>                  | 2.513 (5)  |
| Dy1—O5 <sup>v</sup>                     | 2.406 (5)   | O3—P2 <sup>vii</sup>                 | 1.589 (5)  |
| Dy1—O2 <sup>ii</sup>                    | 2.513 (5)   | O5—Li                                | 1.951 (11) |
| Dy1—O2 <sup>i</sup>                     | 2.513 (5)   | O5—Dy1 <sup>viii</sup>               | 2.406 (5)  |
| Dy1—Li <sup>v</sup>                     | 3.476 (14)  | O6—Dy1 <sup>i</sup>                  | 2.288 (5)  |
| Dy1—Li                                  | 3.548 (14)  | Li—O5 <sup>iii</sup>                 | 1.951 (11) |
| P1—O1                                   | 1.483 (5)   | Li—O2 <sup>i</sup>                   | 1.992 (11) |
| P1—O2                                   | 1.500 (5)   | Li—O2 <sup>ii</sup>                  | 1.992 (11) |
| P1—O4                                   | 1.573 (5)   | Li—P2 <sup>iii</sup>                 | 2.896 (5)  |
| P1—O3                                   | 1.589 (5)   | Li—P1 <sup>i</sup>                   | 3.035 (5)  |
| P1—Li <sup>i</sup>                      | 3.035 (5)   | Li—P1 <sup>ii</sup>                  | 3.035 (5)  |
| P2—O6                                   | 1.475 (5)   | Li—Dy1 <sup>viii</sup>               | 3.476 (14) |
| P2—O5                                   | 1.495 (5)   |                                      |            |
| O6 <sup>i</sup> —Dy1—O6 <sup>ii</sup>   | 149.0 (2)   | O3 <sup>vi</sup> —P2—O4              | 100.9 (3)  |
| O6 <sup>i</sup> —Dy1—O1                 | 93.73 (18)  | O6—P2—Li                             | 126.0 (2)  |
| O6 <sup>ii</sup> —Dy1—O1                | 93.71 (19)  | O3 <sup>vi</sup> —P2—Li              | 121.1 (2)  |
| O6 <sup>i</sup> —Dy1—O1 <sup>iii</sup>  | 93.71 (19)  | O4—P2—Li                             | 67.6 (3)   |
| O6 <sup>ii</sup> —Dy1—O1 <sup>iii</sup> | 93.73 (18)  | P1—O1—Dy1                            | 139.8 (3)  |
| O1—Dy1—O1 <sup>iii</sup>                | 151.9 (2)   | P1—O2—Li <sup>i</sup>                | 120.0 (4)  |
| O6 <sup>i</sup> —Dy1—O5 <sup>iv</sup>   | 74.10 (17)  | P1—O2—Dy1 <sup>i</sup>               | 136.6 (3)  |
| O6 <sup>ii</sup> —Dy1—O5 <sup>iv</sup>  | 79.93 (18)  | Li <sup>i</sup> —O2—Dy1 <sup>i</sup> | 103.3 (3)  |
| O1—Dy1—O5 <sup>iv</sup>                 | 136.63 (17) | P1—O3—P2 <sup>vii</sup>              | 134.3 (4)  |
| O1 <sup>iii</sup> —Dy1—O5 <sup>iv</sup> | 71.43 (16)  | P1—O4—P2                             | 130.8 (3)  |

|   |             |   |             |
|---|-------------|---|-------------|
| O6 <sup>i</sup> —Dy1—O5 <sup>v</sup>    | 79.93 (18)  | P2—O5—Li                                  | 113.7 (4)   |
| O6 <sup>ii</sup> —Dy1—O5 <sup>v</sup>   | 74.10 (17)  | P2—O5—Dy1 <sup>viii</sup>                 | 140.9 (3)   |
| O1—Dy1—O5 <sup>v</sup>                  | 71.43 (16)  | Li—O5—Dy1 <sup>viii</sup>                 | 105.4 (3)   |
| O1 <sup>iii</sup> —Dy1—O5 <sup>v</sup>  | 136.63 (17) | P2—O6—Dy1 <sup>i</sup>                    | 133.6 (3)   |
| O5 <sup>iv</sup> —Dy1—O5 <sup>v</sup>   | 65.5 (2)    | O5—Li—O5 <sup>iii</sup>                   | 83.7 (6)    |
| O6 <sup>i</sup> —Dy1—O2 <sup>ii</sup>   | 137.74 (17) | O5—Li—O2 <sup>i</sup>                     | 119.6 (2)   |
| O6 <sup>ii</sup> —Dy1—O2 <sup>ii</sup>  | 72.95 (15)  | O5 <sup>iii</sup> —Li—O2 <sup>i</sup>     | 125.8 (2)   |
| O1—Dy1—O2 <sup>ii</sup>                 | 84.22 (17)  | O5—Li—O2 <sup>ii</sup>                    | 125.8 (2)   |
| O1 <sup>iii</sup> —Dy1—O2 <sup>ii</sup> | 72.18 (16)  | O5 <sup>iii</sup> —Li—O2 <sup>ii</sup>    | 119.6 (2)   |
| O5 <sup>iv</sup> —Dy1—O2 <sup>ii</sup>  | 132.43 (17) | O2 <sup>i</sup> —Li—O2 <sup>ii</sup>      | 87.2 (6)    |
| O5 <sup>v</sup> —Dy1—O2 <sup>ii</sup>   | 137.20 (17) | O5—Li—P2                                  | 28.19 (15)  |
| O6 <sup>i</sup> —Dy1—O2 <sup>i</sup>    | 72.95 (15)  | O5 <sup>iii</sup> —Li—P2                  | 111.9 (5)   |
| O6 <sup>ii</sup> —Dy1—O2 <sup>i</sup>   | 137.74 (17) | O2 <sup>i</sup> —Li—P2                    | 99.89 (18)  |
| O1—Dy1—O2 <sup>i</sup>                  | 72.18 (16)  | O2 <sup>ii</sup> —Li—P2                   | 108.8 (2)   |
| O1 <sup>iii</sup> —Dy1—O2 <sup>i</sup>  | 84.22 (17)  | O5—Li—P2 <sup>iii</sup>                   | 111.9 (5)   |
| O5 <sup>iv</sup> —Dy1—O2 <sup>i</sup>   | 137.20 (17) | O5 <sup>iii</sup> —Li—P2 <sup>iii</sup>   | 28.19 (15)  |
| O5 <sup>v</sup> —Dy1—O2 <sup>i</sup>    | 132.43 (17) | O2 <sup>i</sup> —Li—P2 <sup>iii</sup>     | 108.8 (2)   |
| O2 <sup>ii</sup> —Dy1—O2 <sup>i</sup>   | 66.2 (2)    | O2 <sup>ii</sup> —Li—P2 <sup>iii</sup>    | 99.89 (18)  |
| O6 <sup>i</sup> —Dy1—Li <sup>v</sup>    | 74.52 (12)  | P2—Li—P2 <sup>iii</sup>                   | 140.1 (5)   |
| O6 <sup>ii</sup> —Dy1—Li <sup>v</sup>   | 74.52 (12)  | O5—Li—P1 <sup>i</sup>                     | 102.86 (18) |
| O1—Dy1—Li <sup>v</sup>                  | 104.06 (11) | O5 <sup>iii</sup> —Li—P1 <sup>i</sup>     | 108.3 (2)   |
| O1 <sup>iii</sup> —Dy1—Li <sup>v</sup>  | 104.06 (11) | O2 <sup>i</sup> —Li—P1 <sup>i</sup>       | 25.34 (15)  |
| O5 <sup>iv</sup> —Dy1—Li <sup>v</sup>   | 32.77 (12)  | O2 <sup>ii</sup> —Li—P1 <sup>i</sup>      | 112.5 (5)   |
| O5 <sup>v</sup> —Dy1—Li <sup>v</sup>    | 32.77 (12)  | P2—Li—P1 <sup>i</sup>                     | 92.53 (5)   |
| O2 <sup>ii</sup> —Dy1—Li <sup>v</sup>   | 146.88 (11) | P2 <sup>iii</sup> —Li—P1 <sup>i</sup>     | 101.64 (5)  |
| O2 <sup>i</sup> —Dy1—Li <sup>v</sup>    | 146.88 (11) | O5—Li—P1 <sup>ii</sup>                    | 108.3 (2)   |
| O6 <sup>i</sup> —Dy1—Li                 | 105.48 (12) | O5 <sup>iii</sup> —Li—P1 <sup>ii</sup>    | 102.86 (18) |
| O6 <sup>ii</sup> —Dy1—Li                | 105.48 (12) | O2 <sup>i</sup> —Li—P1 <sup>ii</sup>      | 112.5 (5)   |
| O1—Dy1—Li                               | 75.94 (11)  | O2 <sup>ii</sup> —Li—P1 <sup>ii</sup>     | 25.34 (15)  |
| O1 <sup>iii</sup> —Dy1—Li               | 75.94 (11)  | P2—Li—P1 <sup>ii</sup>                    | 101.64 (5)  |
| O5 <sup>iv</sup> —Dy1—Li                | 147.23 (12) | P2 <sup>iii</sup> —Li—P1 <sup>ii</sup>    | 92.53 (5)   |
| O5 <sup>v</sup> —Dy1—Li                 | 147.23 (12) | P1 <sup>i</sup> —Li—P1 <sup>ii</sup>      | 137.8 (5)   |
| O2 <sup>ii</sup> —Dy1—Li                | 33.12 (11)  | O5—Li—Dy1 <sup>viii</sup>                 | 41.9 (3)    |
| O2 <sup>i</sup> —Dy1—Li                 | 33.12 (11)  | O5 <sup>iii</sup> —Li—Dy1 <sup>viii</sup> | 41.9 (3)    |
| Li <sup>v</sup> —Dy1—Li                 | 180.000 (5) | O2 <sup>i</sup> —Li—Dy1 <sup>viii</sup>   | 136.4 (3)   |
| O1—P1—O2                                | 118.3 (3)   | O2 <sup>ii</sup> —Li—Dy1 <sup>viii</sup>  | 136.4 (3)   |
| O1—P1—O4                                | 106.4 (3)   | P2—Li—Dy1 <sup>viii</sup>                 | 70.0 (3)    |
| O2—P1—O4                                | 111.6 (3)   | P2 <sup>iii</sup> —Li—Dy1 <sup>viii</sup> | 70.0 (3)    |
| O1—P1—O3                                | 112.1 (3)   | P1 <sup>i</sup> —Li—Dy1 <sup>viii</sup>   | 111.1 (2)   |
| O2—P1—O3                                | 105.0 (3)   | P1 <sup>ii</sup> —Li—Dy1 <sup>viii</sup>  | 111.1 (2)   |
| O4—P1—O3                                | 102.4 (3)   | O5—Li—Dy1                                 | 138.1 (3)   |

## supplementary materials

---

|                        |           |                             |           |
|------------------------|-----------|-----------------------------|-----------|
| O1—P1—Li <sup>i</sup>  | 90.9 (3)  | O5 <sup>iii</sup> —Li—Dy1   | 138.1 (3) |
| O4—P1—Li <sup>i</sup>  | 144.5 (3) | O2 <sup>i</sup> —Li—Dy1     | 43.6 (3)  |
| O3—P1—Li <sup>i</sup>  | 99.2 (2)  | O2 <sup>ii</sup> —Li—Dy1    | 43.6 (3)  |
| O6—P2—O5               | 119.7 (3) | P2—Li—Dy1                   | 110.0 (3) |
| O6—P2—O3 <sup>vi</sup> | 112.5 (3) | P2 <sup>iii</sup> —Li—Dy1   | 110.0 (3) |
| O5—P2—O3 <sup>vi</sup> | 107.3 (3) | P1 <sup>i</sup> —Li—Dy1     | 68.9 (2)  |
| O6—P2—O4               | 109.7 (3) | P1 <sup>ii</sup> —Li—Dy1    | 68.9 (2)  |
| O5—P2—O4               | 104.9 (3) | Dy1 <sup>viii</sup> —Li—Dy1 | 180.0     |

Symmetry codes: (i)  $-x+1, -y+1, -z+2$ ; (ii)  $x, -y+1, z-1/2$ ; (iii)  $-x+1, y, -z+3/2$ ; (iv)  $-x+1, y+1, -z+3/2$ ; (v)  $x, y+1, z$ ; (vi)  $-x+1/2, y-1/2, -z+3/2$ ; (vii)  $-x+1/2, y+1/2, -z+3/2$ ; (viii)  $x, y-1, z$ .



Fig. 1

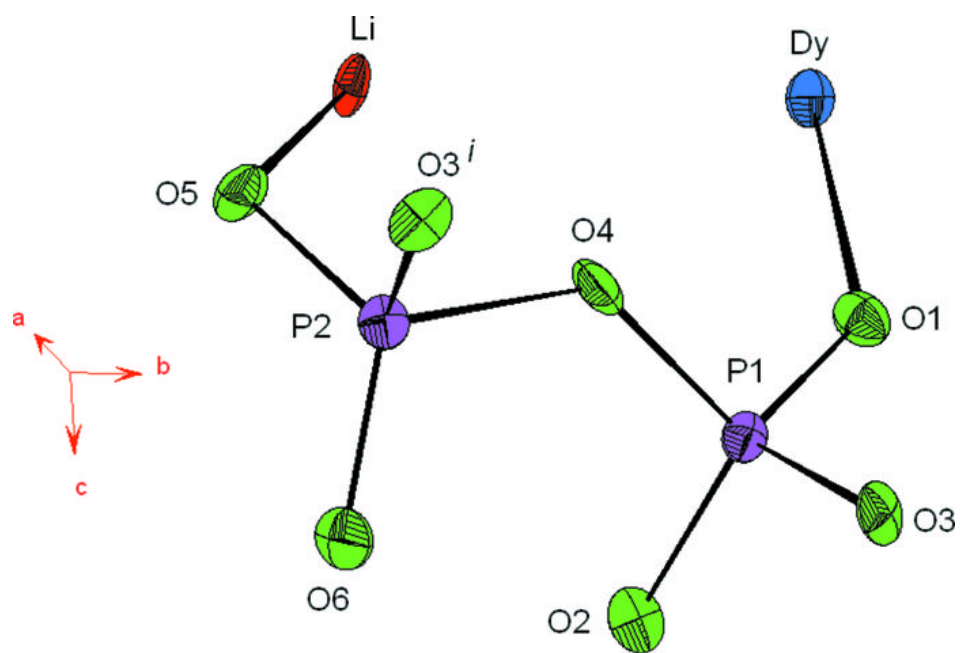


Fig. 2

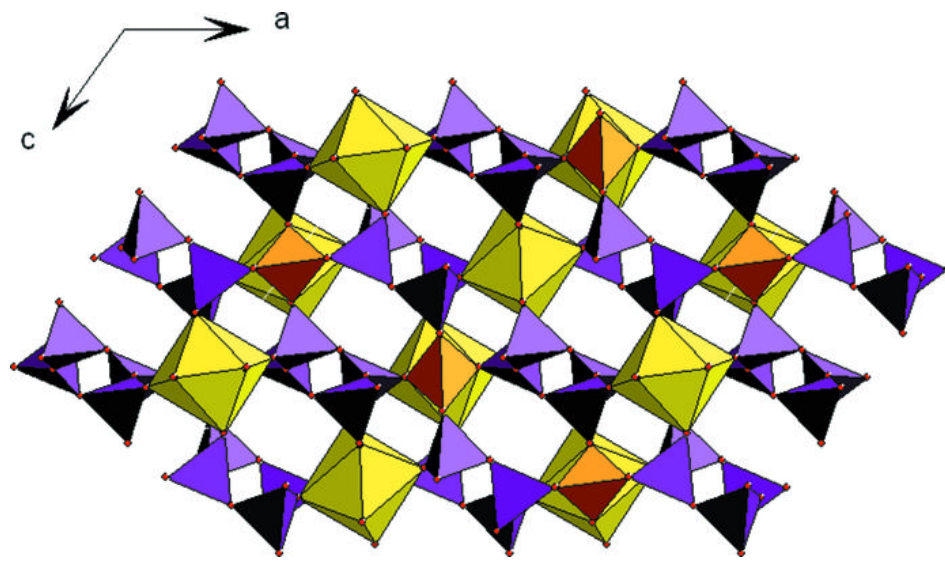


Fig. 3

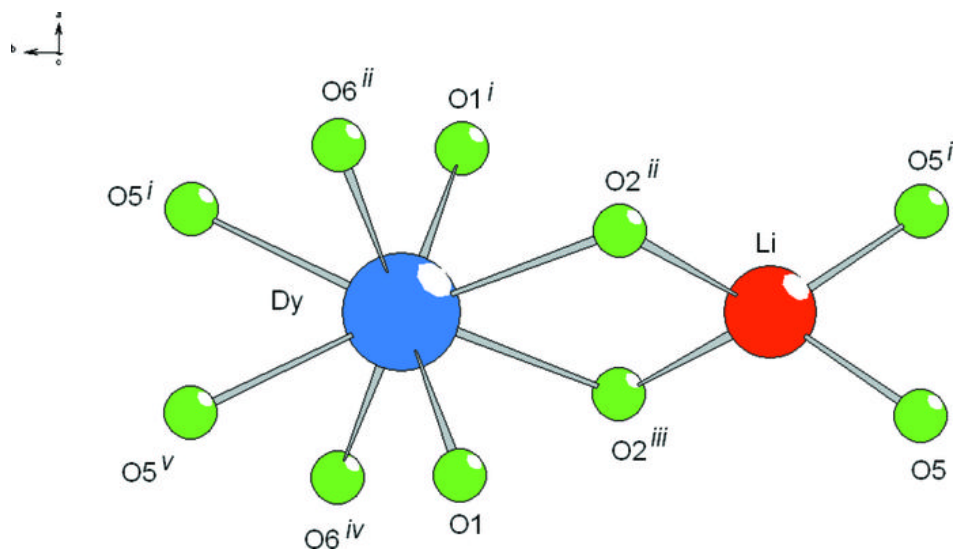


Fig. 4

